

DETAILS

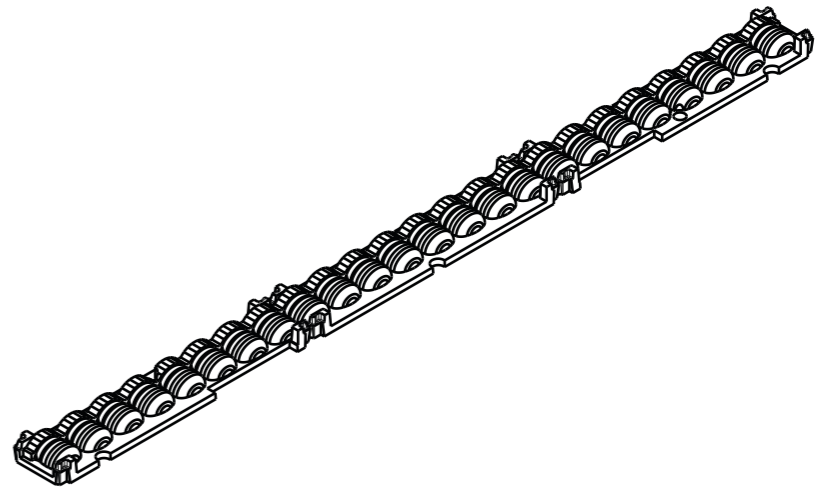
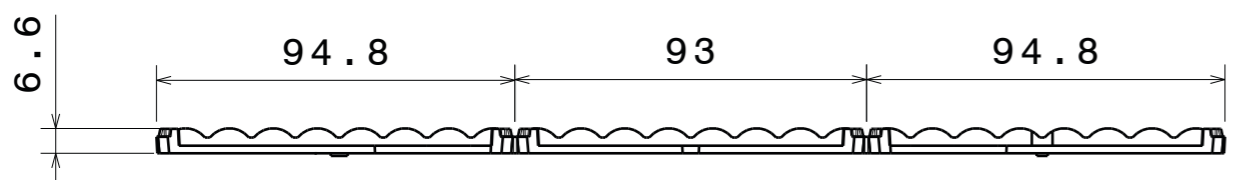
Product Number	F15685_FLORENCE-1R-GC-ZT25
Family	Florence
Type	Lens
Color	clear
Diameter	19 x 282,6 mm
Height	6,55 mm
Style	rectang
Optic Material	PMMA
Holder Material	
Fastening	screw
Status	production ready
ROHS Compliant	Yes
Date Updated	22/03/2017

OPTICAL PROPERTIES

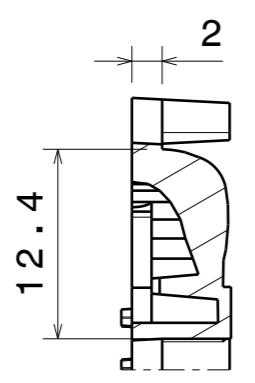
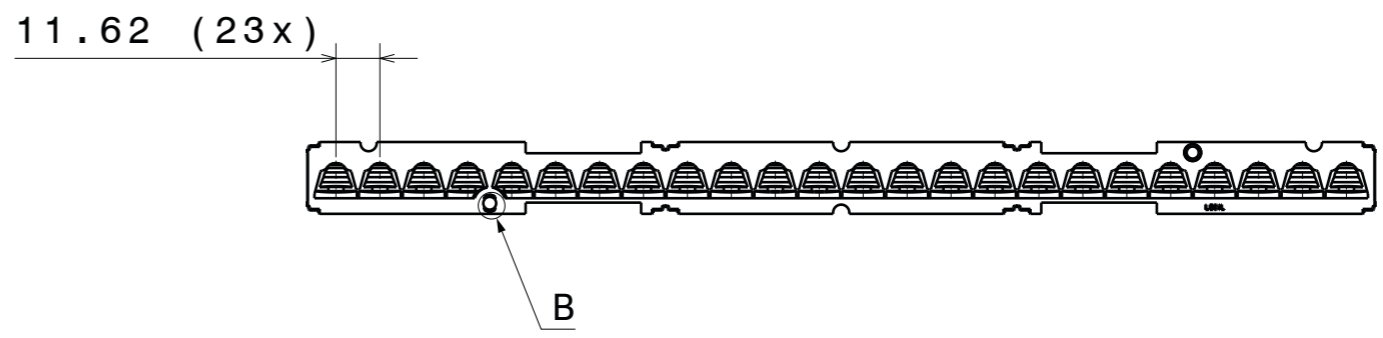
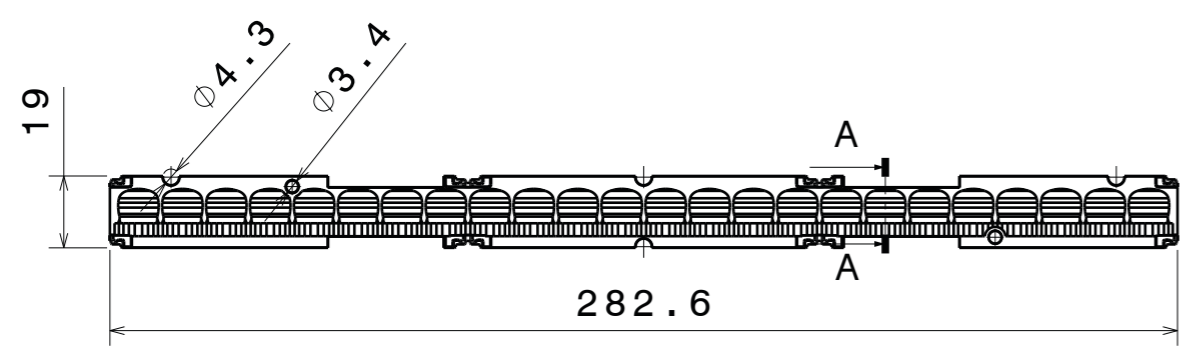
LED	Viewing Angle	Light Beam	Efficiency	cd/lm	Connector
NF2x757D	Asymmetric deg	Asymmetric	91 %	0.730	-
Duris E 2835	sim: Asymmetric	Asymmetric	sim: 92 %	sim: 0.750	-



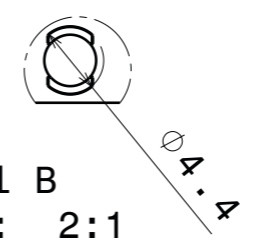
H G F E D C B A



Isometric view
Scale: 1:2



Section view A-A
Scale: 2:1



Detail B
Scale: 2:1

NOTE: Maximum recommended tightening torque is 0.6Nm

INDEX	PART NO	DESCRIPTION	MATERIAL	COLOUR
1	F15685	F15685_FLORENCE-1R-GC-ZT25	PMMA 8N	

Tolerances if not otherwise shown
According to DIN ISO 2768-1
Linear measures:
Up to 30mm class F_M, otherwise see class MC.
According to DIN ISO 2768-2
Form and position: class K
Control for SPC marked dimensions.

LEDiL LediL Oy
Salorankatu 10
FIN 24240 SALO
Finland

THIRD ANGLE PROJECTION:

DRAWING TITLE
F15685_FLORENCE-1R-GC-ZT25

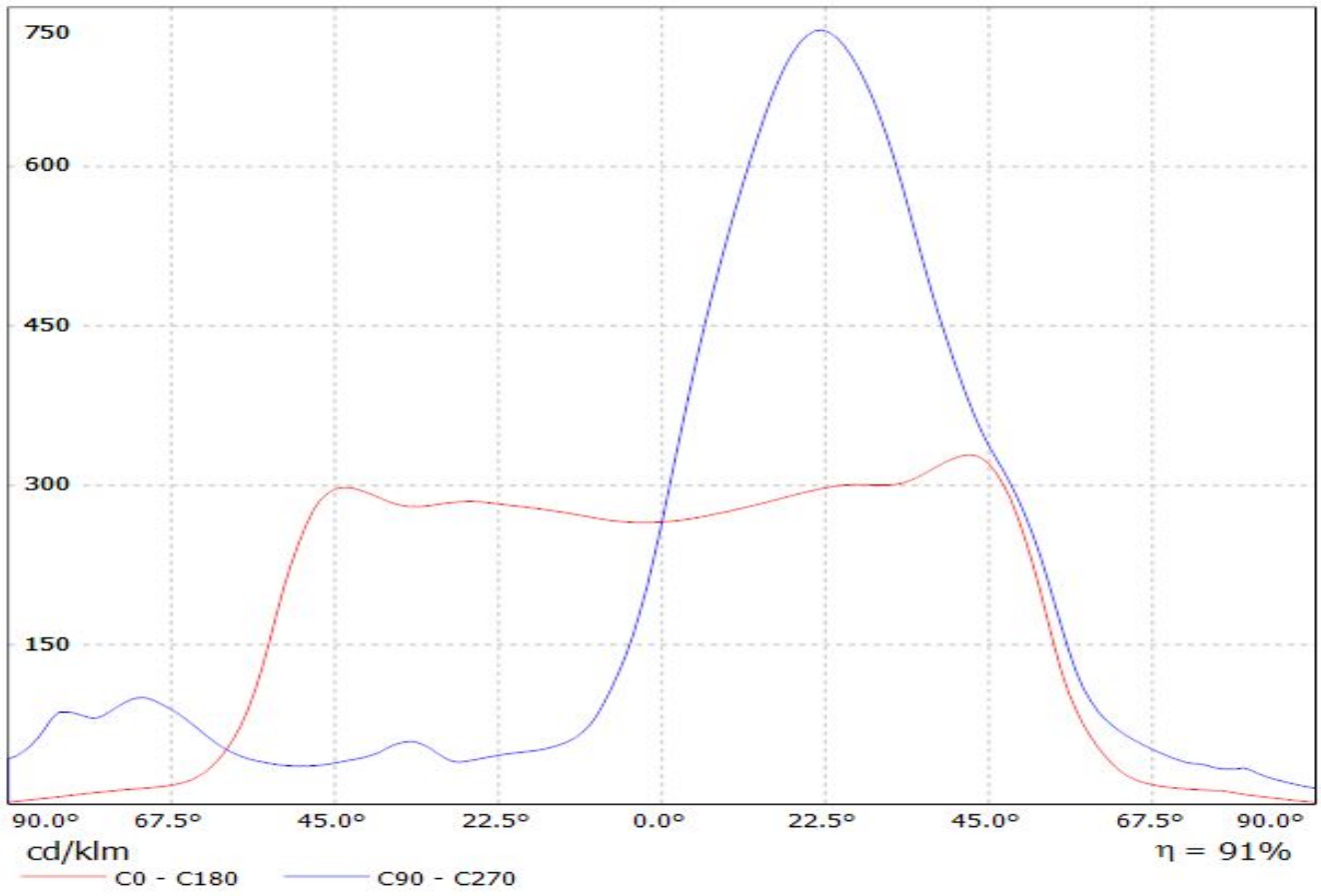
This drawing is the property of LEDiL Oy. It may not be reproduced, copied or communicated without a written agreement with LEDiL Oy.

SIZE PART NUMBER
A3 F15685

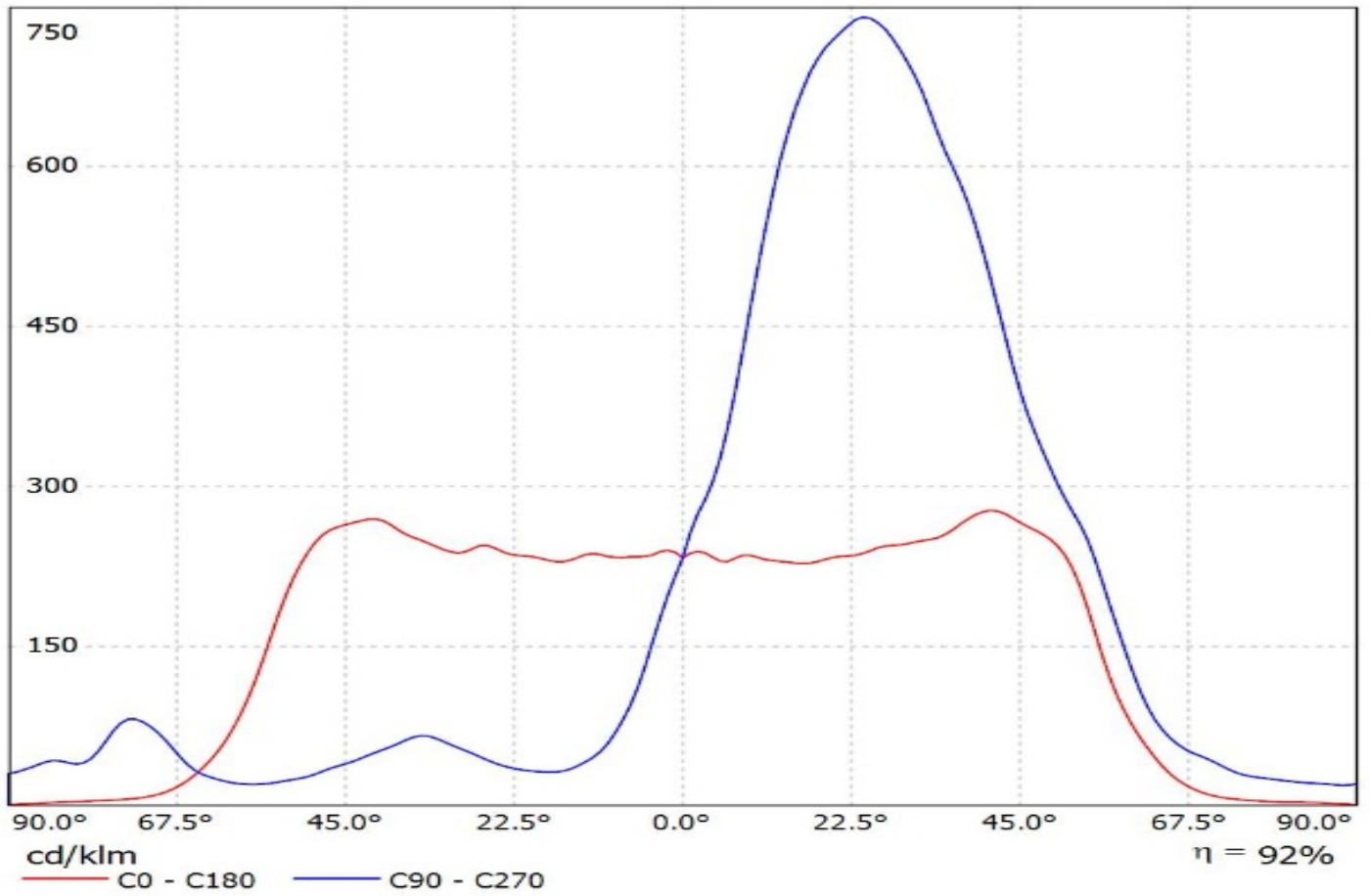
SCALE 1:2 WEIGHT 16,9 SHEET 1/1

H G B A

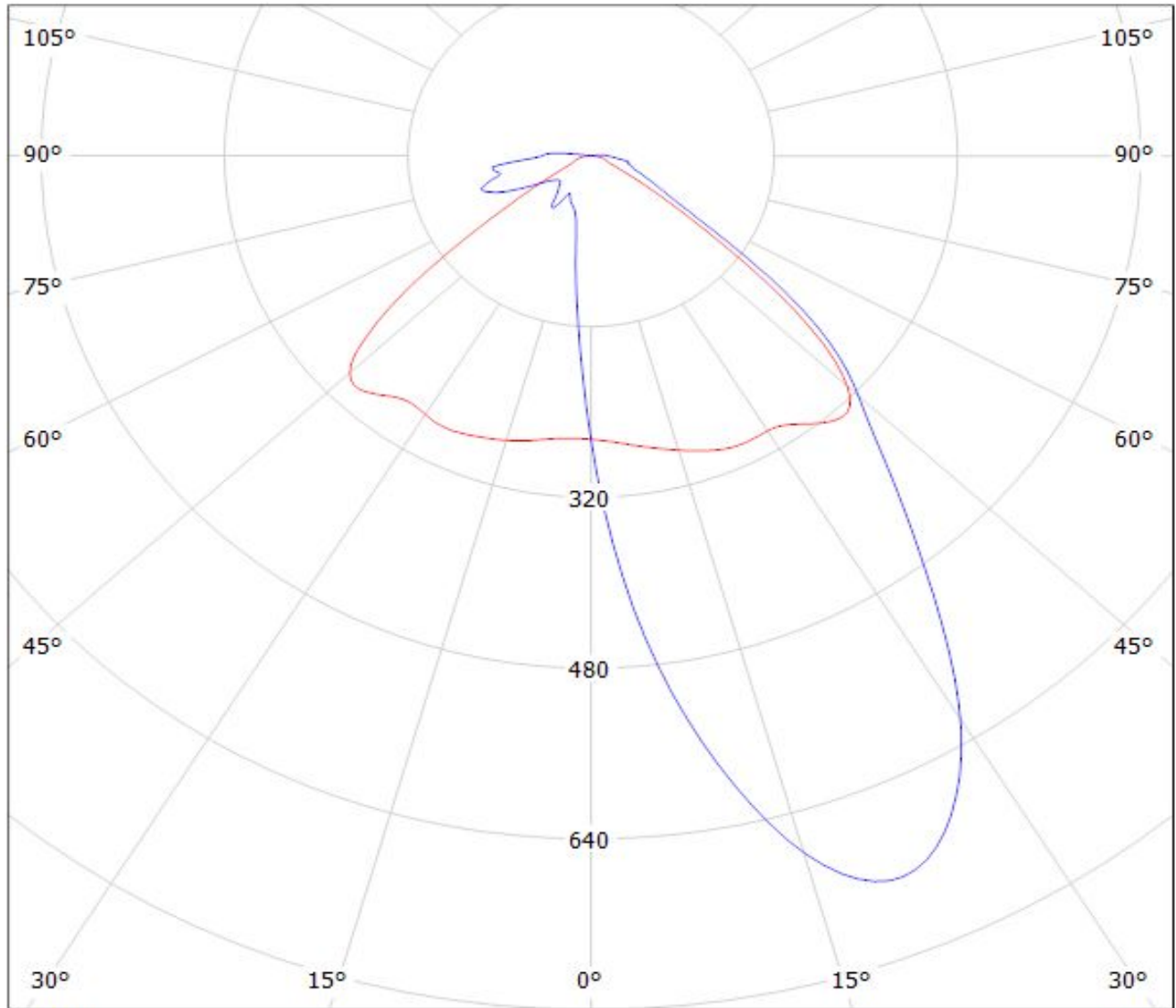
Luminaire: Ledil F15685_FLORENCE-1R-GC-ZT25_(NT2L757DRE)
Lamps: 1 x Nichia_NT2L757DRE_1676.47lm@250mA_P=18.3827W_I=0.250A



Luminaire: Ledil Oy F15685_FLORENCE-1R-GC-ZT25_(Duris_E_2835)_SIMULATED
Lamps: 1 x Osram Duris E 2835 - GW JTLRS1.EM



Luminaire: Ledil F15685_FLORENCE-1R-GC-ZT25_(NT2L757DRE)
Lamps: 1 x Nichia_NT2L757DRE_1676.47lm@250mA_P=18.3827W_I=0.250A

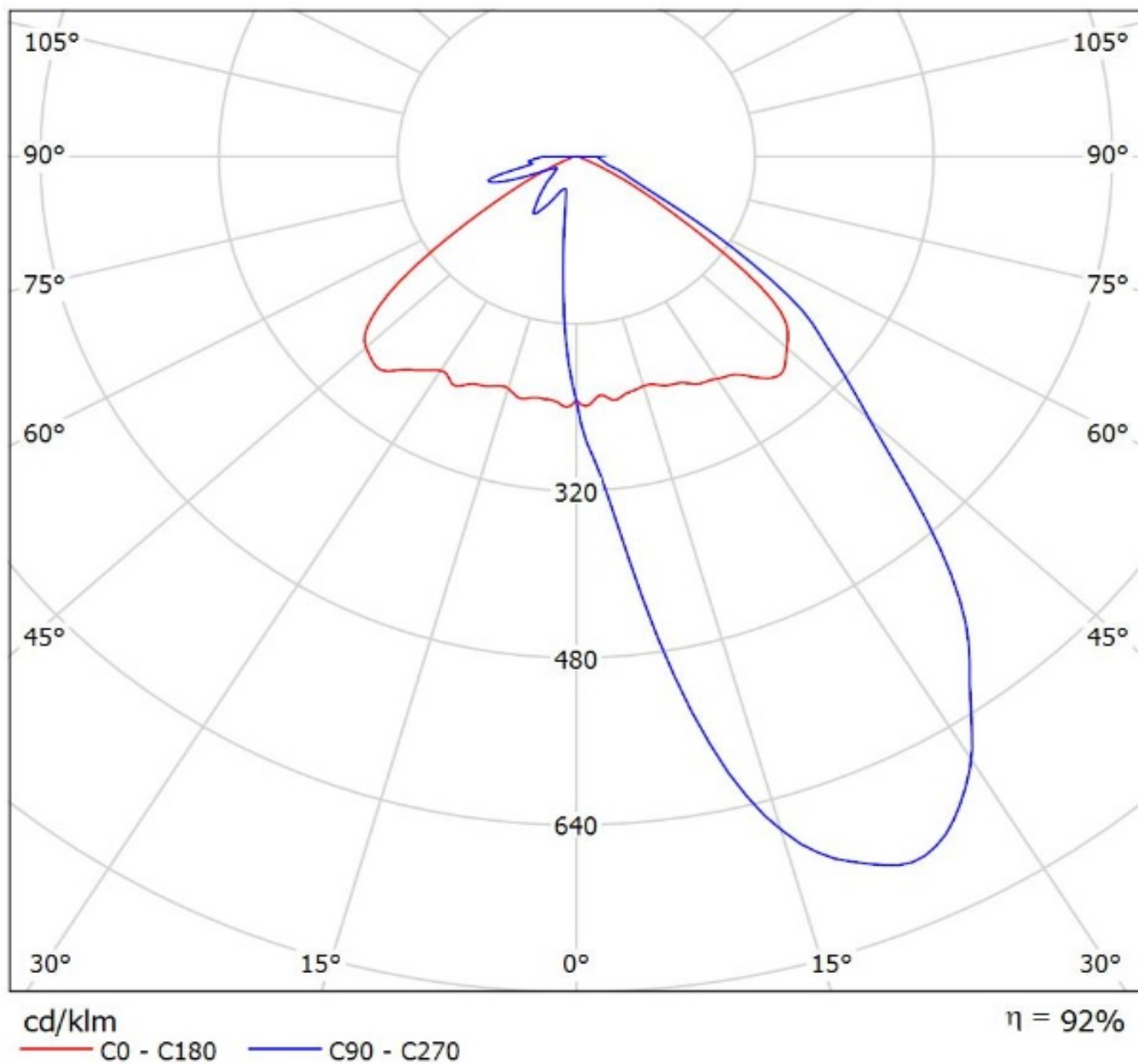


cd/klm

— C0 - C180 — C90 - C270

$\eta = 91\%$

Luminaire: Ledil Oy F15685_FLORENCE-1R-GC-ZT25_(Duris_E_2835)_SIMULATED
Lamps: 1 x Osram Duris E 2835 - GW JTLRS1.EM



NOTE: The typical divergence will be changed by different color, chip size and chip position tolerance. The typical total divergence is the full angle measured where the luminous intensity is half of the peak value.