

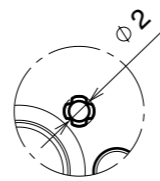
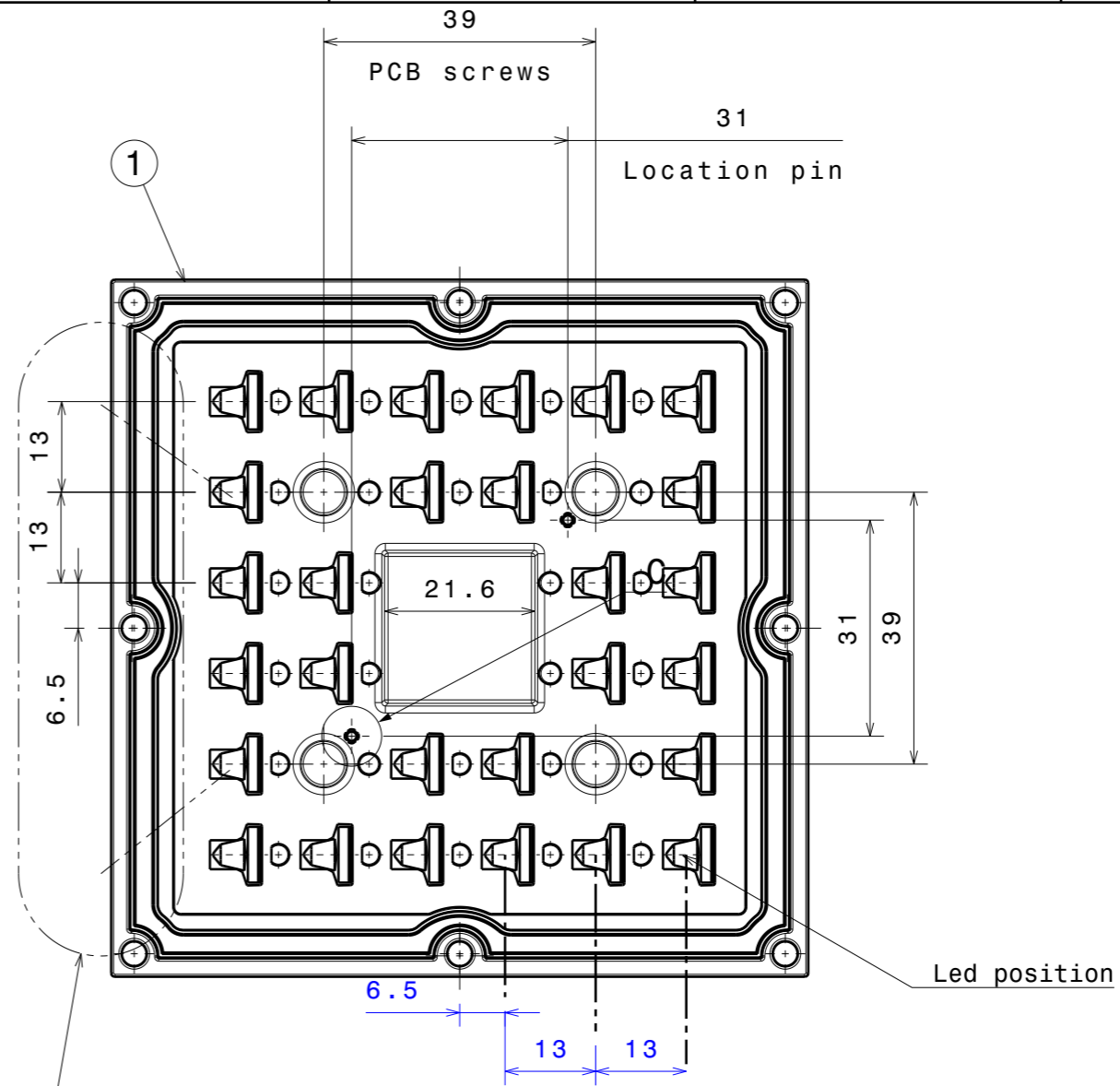
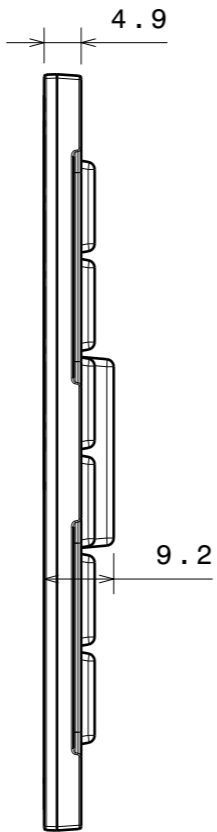
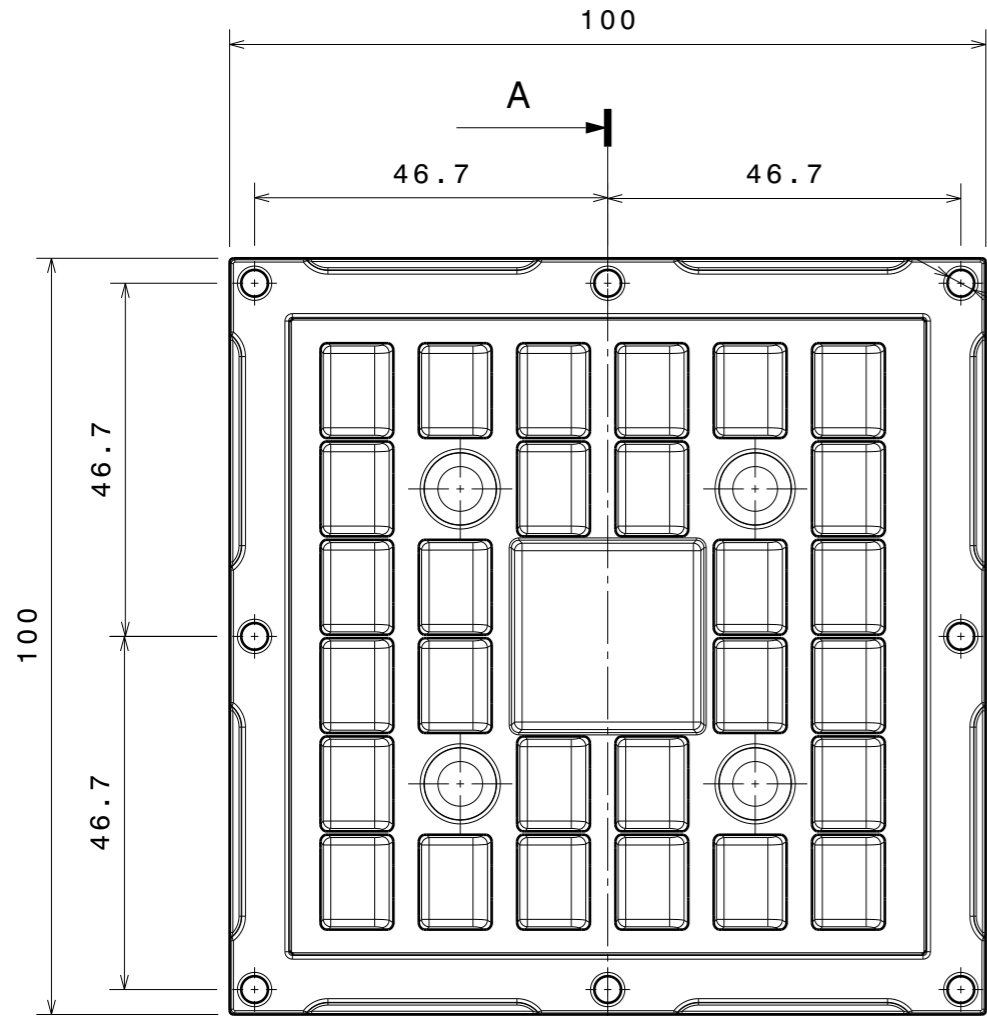
## DETAILS

<b>Product Number</b>	CS15911_STRADELLA-IP-28-T2-PC
<b>Family</b>	Stradella
<b>Type</b>	Lens
<b>Color</b>	clear
<b>Diameter</b>	100*100 mm
<b>Height</b>	9,2 mm
<b>Style</b>	square
<b>Optic Material</b>	PC
<b>Holder Material</b>	
<b>Fastening</b>	screw
<b>Status</b>	production ready
<b>ROHS Compliant</b>	Yes
<b>Date Updated</b>	11/12/2017



## OPTICAL PROPERTIES

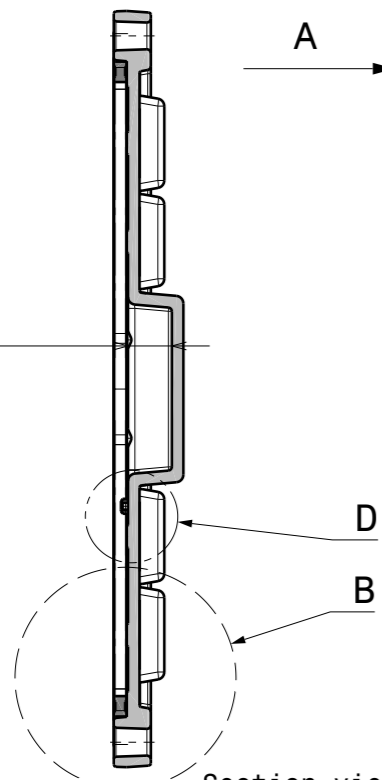
LED	Viewing Angle	Light Beam	Efficiency	cd/lm	Connector
XT-E	sim: Asymmetric	Asymmetric	-	sim: 0.000	-
XP-G3	sim: Asymmetric	Asymmetric	sim: 90 %	sim: 0.420	-
LUXEON 3030 2D	Asymmetric deg	Asymmetric	91 %	0.930	-
Duris S5 (2 chip)	Asymmetric deg	Asymmetric	92 %	0.760	-



Detail C  
Scale: 2:1

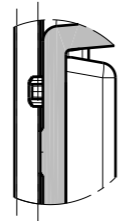
Beam direction

Typical space for component  
5.8

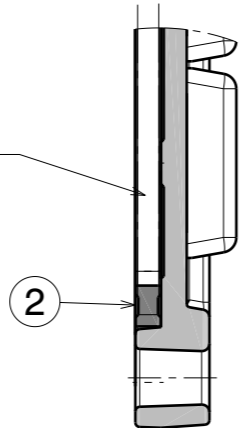


Section view A-A  
Scale: 1:1

Detail D  
Scale: 2:1



PCB space inside seal 81x 81mm



Detail B  
Scale: 2:1

INDEX	PART NO	DESCRIPTION	MATERIAL	COLOUR
1	C15899	STRADELLA-28-T2	PC	clear
2	C15900	STRADELLA-28-SEAL	Silicone	

Tolerances if not otherwise shown  
According to DIN ISO 2768-1  
Linear measures:  
Up to 30mm class M, otherwise class C.  
According to DIN ISO 2768-2  
Form and position: class L

**LEDiL** LediL Oy  
Salorankatu 10  
FIN 24240 SALO  
Finland

THIRD ANGLE PROJECTION:

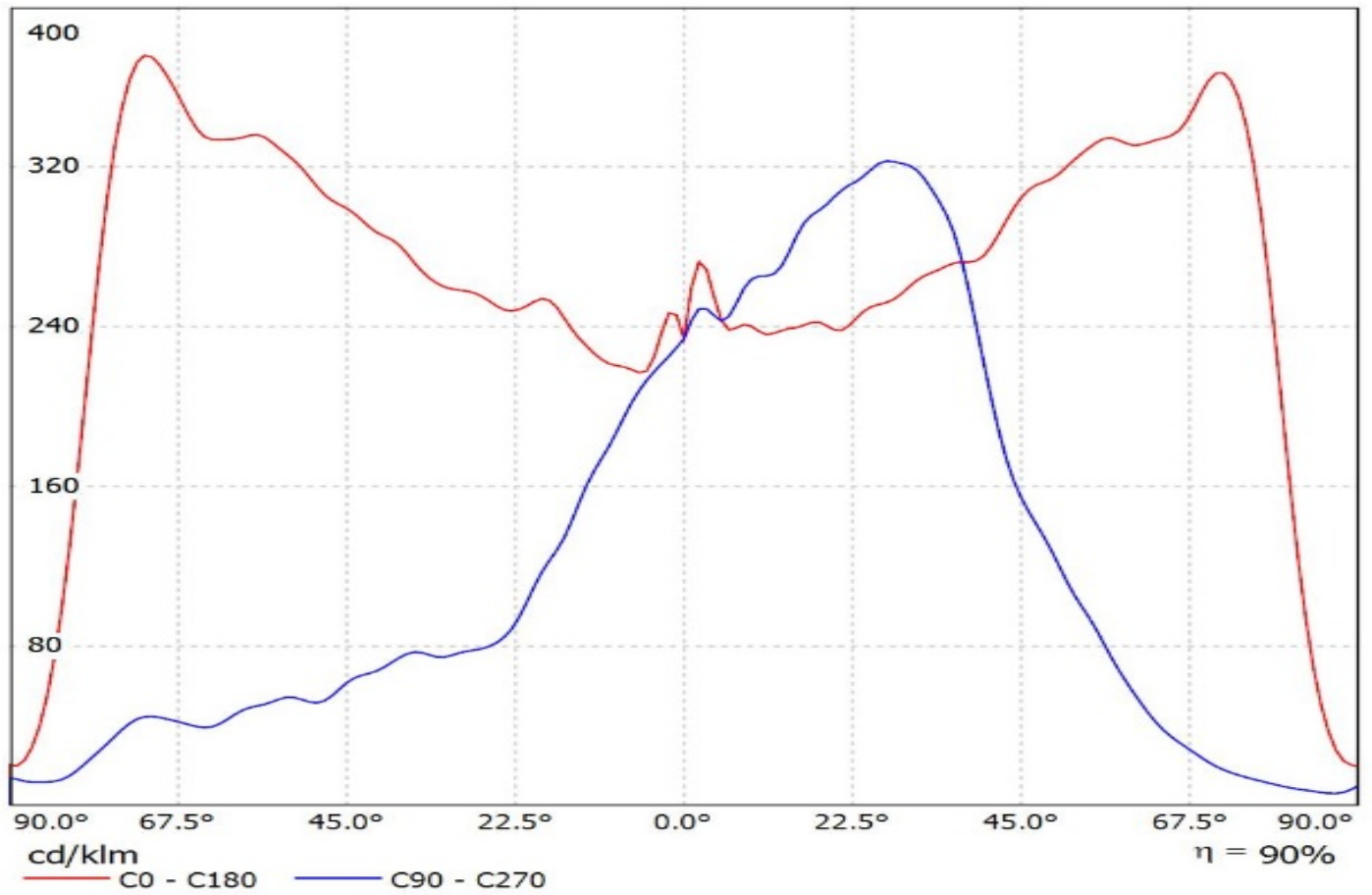
DRAWING TITLE  
**CS15911\_STRADELLA-28-T2**

This drawing is the property of LEDiL Oy. It may not be reproduced, copied or communicated without a written agreement with LEDiL Oy.

SIZE **A3** PART NUMBER **Datasheet**

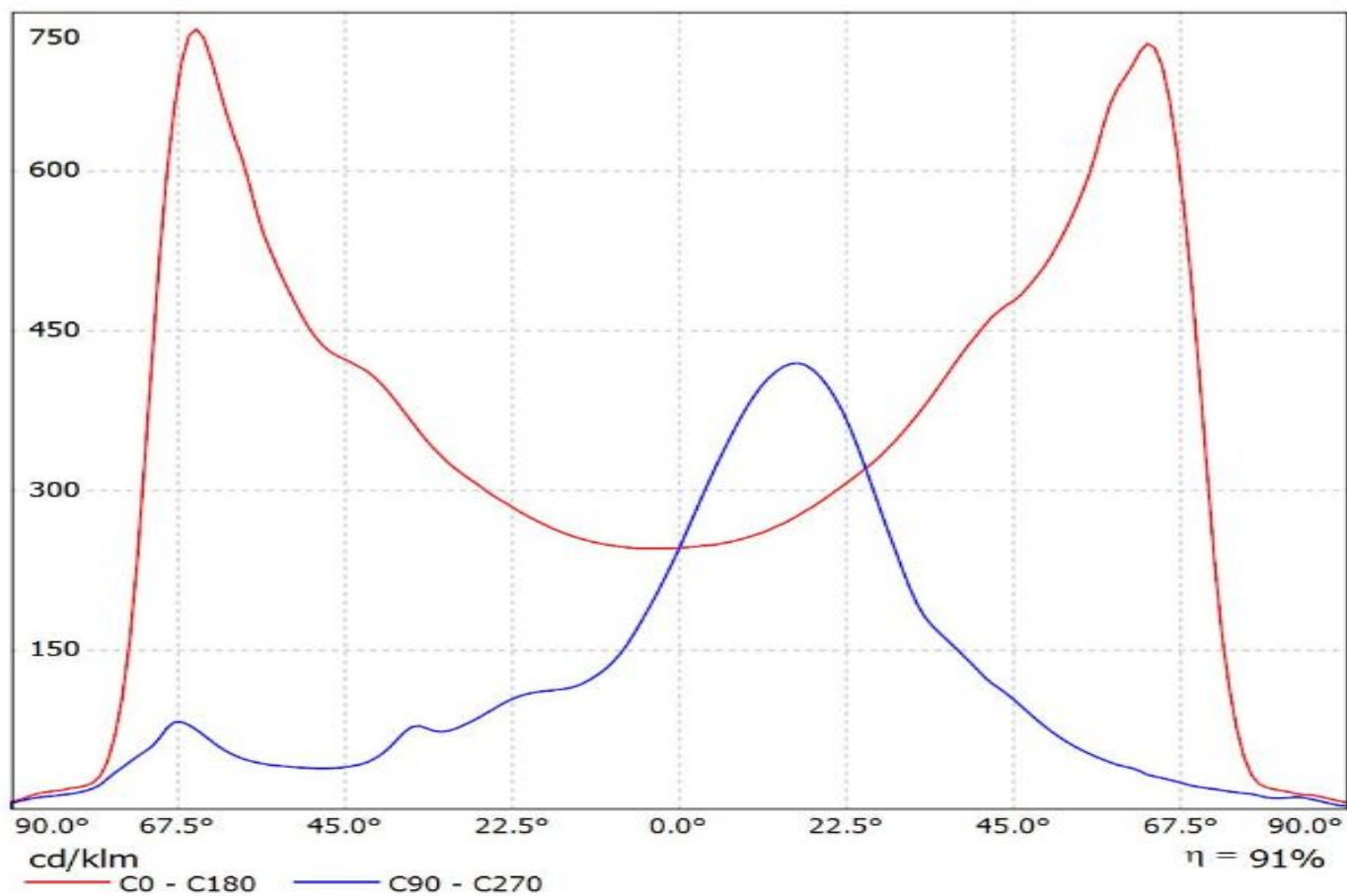
SCALE 1:1 WEIGHT SHEET 1/1

Luminaire: Ledil Oy CS15911\_STRADELLA-IP-28-T2-PC\_(XP-G3)\_SIMULATED  
Lamps: 1 x Cree XP-G3



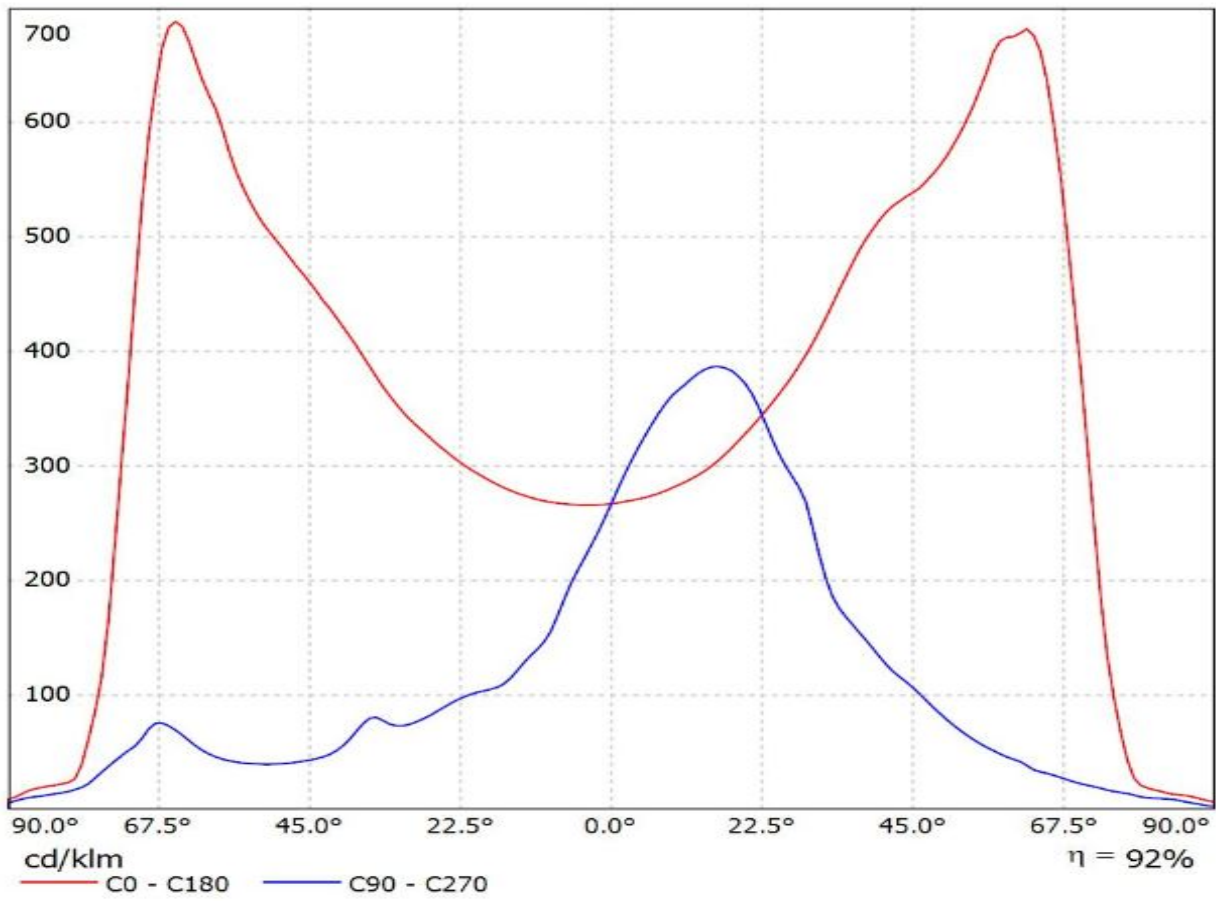
Luminaire: Ledil CS15911\_STRADELLA-IP-28-T2-PC\_(Luxeon\_3030\_2D)

Lamps: 1 x Lumileds\_Luxeon\_3030\_2D\_1132.31lm@240mA\_P=9.57624W\_U=39.901V

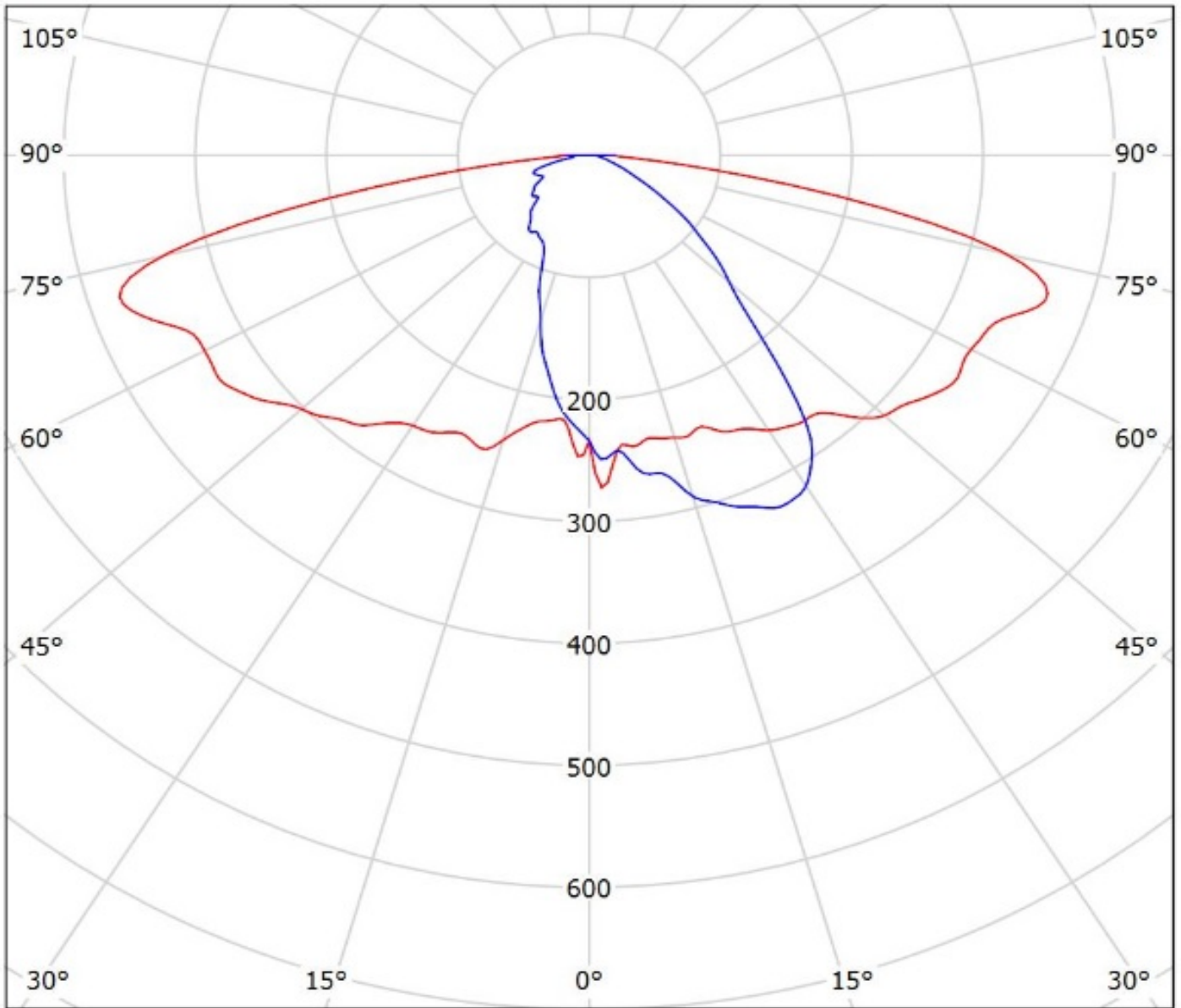


Luminaire: Ledil CS15911\_STRADELLA-IP-28-T2-PC\_(Duris\_S5)

Lamps: 1 x Osram\_Duris\_S5\_Stradella28\_(GW\_PSLR32.EM-JQJS-A333-1)\_786.457lm@250mA\_P=4.90979W\_I=0.250A



Luminaire: Ledil Oy CS15911\_STRADELLA-IP-28-T2-PC\_(XP-G3)\_SIMULATED  
Lamps: 1 x Cree XP-G3



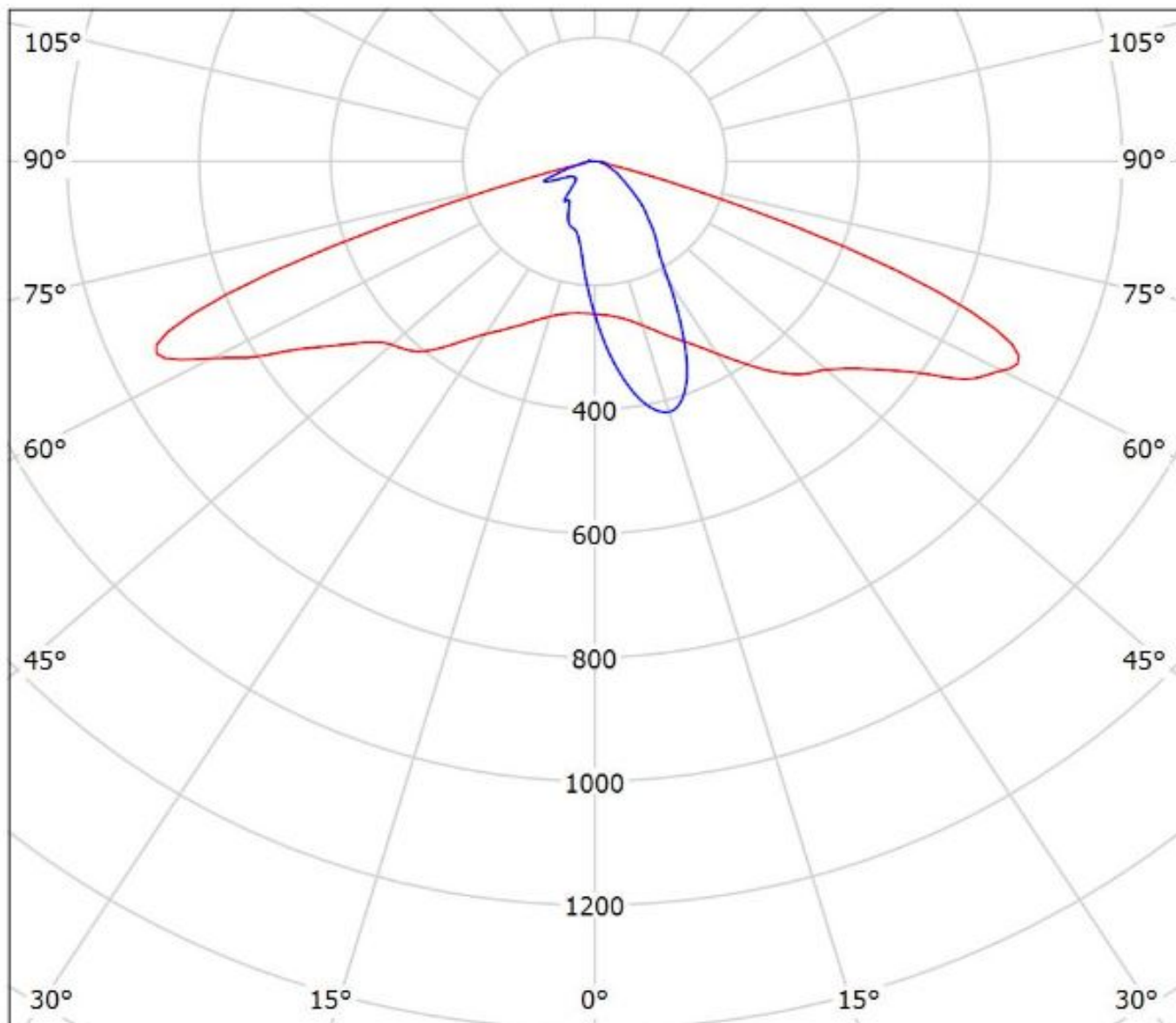
cd/klm  
— C0 - C180 — C90 - C270

$\eta = 90\%$



Luminaire: Ledil CS15911\_STRADELLA-IP-28-T2-PC\_(Luxeon\_3030\_2D)

Lamps: 1 x Lumileds\_Luxeon\_3030\_2D\_1132.31lm@240mA\_P=9.57624W\_U=39.901V

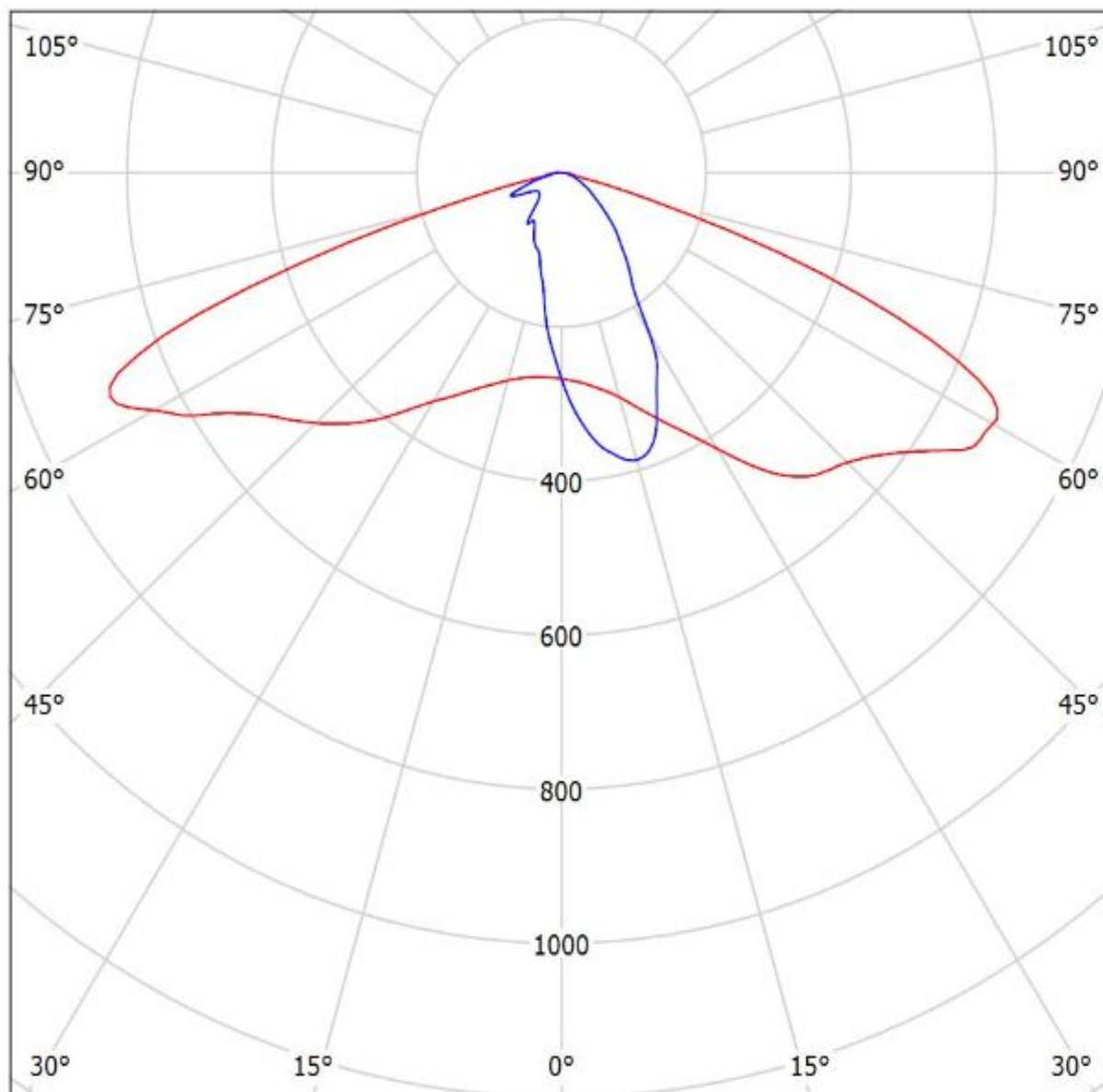


cd/klm  
— C0 - C180 — C90 - C270

$\eta = 91\%$

Luminaire: Ledil CS15911\_STRADELLA-IP-28-T2-PC\_(Duris\_S5)

Lamps: 1 x Osram\_Duris\_S5\_Stradella28\_(GW\_PSLR32.EM-JQJS-A333-1)\_786.457lm@250mA\_P=4.90979W\_η=0.250A



cd/klm

— C0 - C180 — C90 - C270

η = 92%



**NOTE: The typical divergence will be changed by different color, chip size and chip position tolerance. The typical total divergence is the full angle measured where the luminous intensity is half of the peak value.**